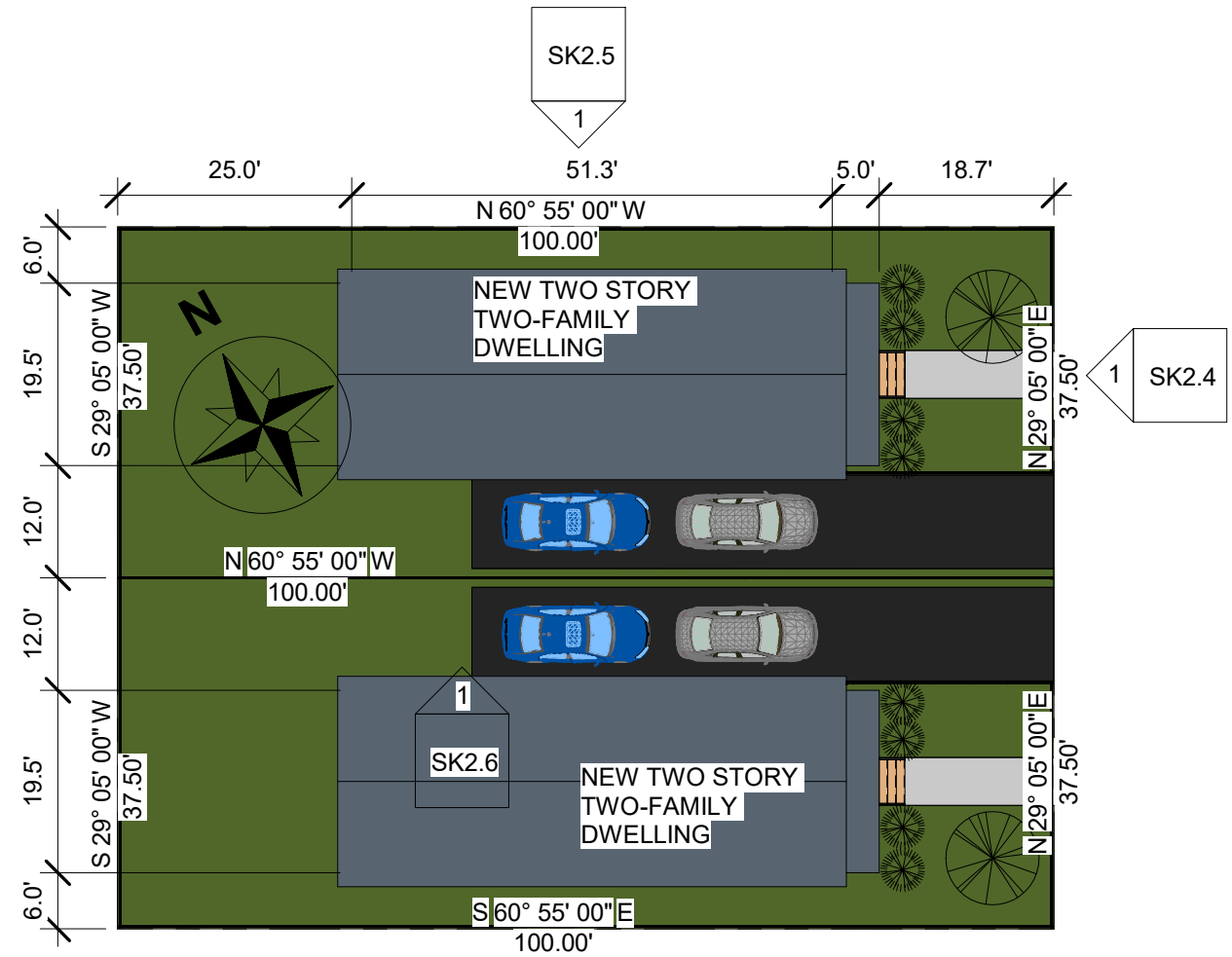


SK2.7 1



1 Site Plan
1" = 20'-0"

Zoning Analysis

Zoning Area: Greenwood Redevelopment Zone - Residential

	Required	Proposed	Variance
Use	Two Family	Two Family	No
Minimum Lot Size			
Area	3,500 Sq. Ft.	3,750 Sq. Ft.	No
Width	35.0'	37.5 Ft.	No
Depth	100.0'	100.0'	No
Minimum Yard Dimensions			
Front	TBD	20.0'	TBD
One Side	3.0'	6.0'	No
Rear	20.0'	25.0'	No
Max Bldg Height	3 Stories	2 1/2 Stories	No
	35.0'	30.5'	No
Lot Area per Family	2 Family/2500-3999sf	3750 sf	No
Parking	2 Cars	2 Cars	No
Driveway Width	10.0'	10.0'	No



Green Stories LLC

855 Bloomfield Avenue
Suite 200A
Glen Ridge, NJ 07028

phone: (973) 377-6877
fax: (973) 707-2256
Info@GreenStoriesLLC.com
www.GreenStoriesLLC.com

Colonial Homes
87 N 18th St
East Orange, NJ 07017
Block 61, Lot 6

Project Number: 19PA-02

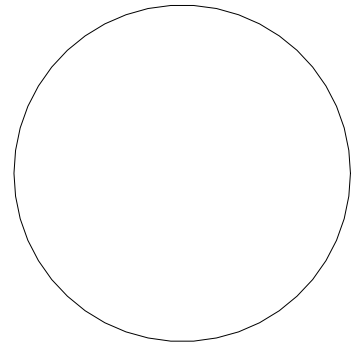
Designed By: TLR

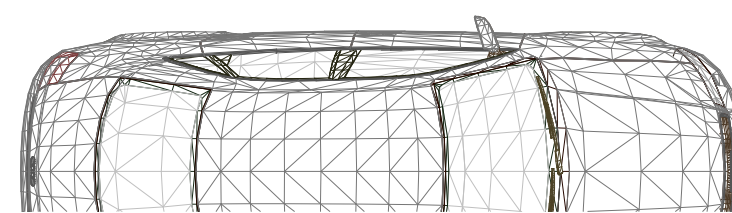
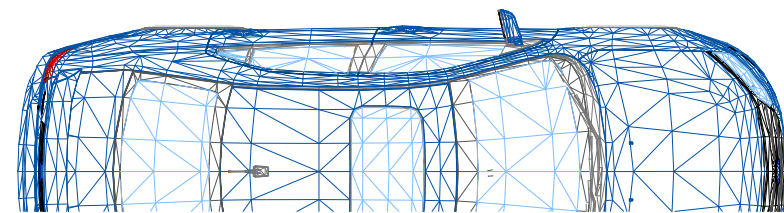
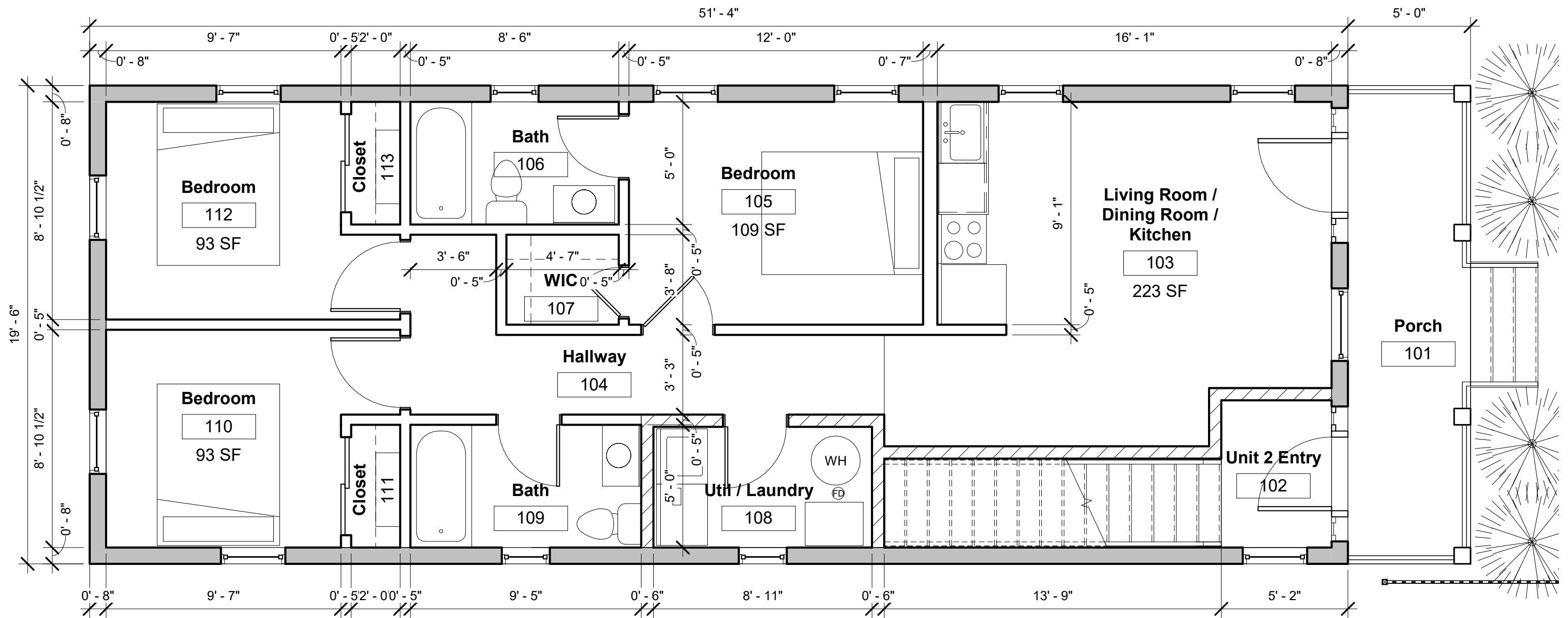
Drawn By: TLR

Checked By: TLR

Date: 07/30/19

**Cover Sheet
SK2.1**





1 First Floor
1/4" = 1'-0"



Green Stories LLC

855 Bloomfield Avenue
Suite 200A
Glen Ridge, NJ 07028

phone: (973) 377-6877
fax: (973) 707-2256
Info@GreenStoriesLLC.com
www.GreenStoriesLLC.com

Colonial Homes
87 N 18th St
East Orange, NJ 07017
Block 61, Lot 6

Project Number: 19PA-02

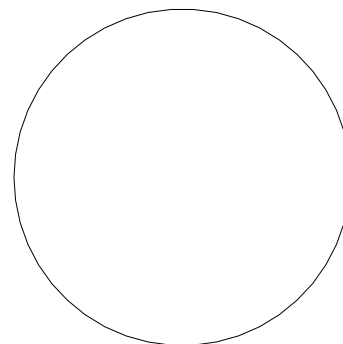
Designed By: TLR

Drawn By: TLR

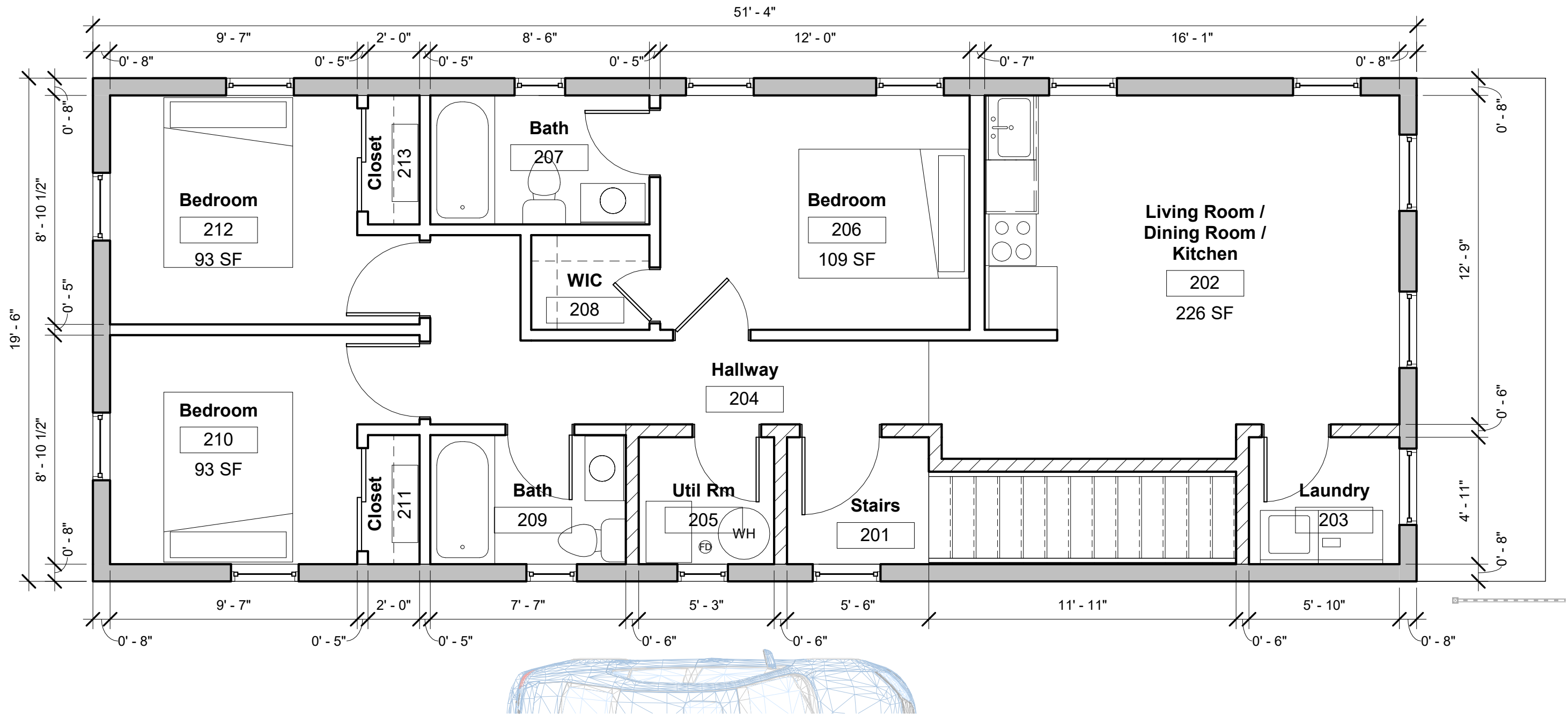
Checked By: TLR

Date: 07/30/19

First Floor
Plan
SK2.2



(c) 2019 MBA Architects



1 Second Floor
1/4" = 1'-0"



Green Stories LLC

855 Bloomfield Avenue
Suite 200A
Glen Ridge, NJ 07028

phone: (973) 377-6877
fax: (973) 707-2256
Info@GreenStoriesLLC.com
www.GreenStoriesLLC.com

Colonial Homes
87 N 18th St
East Orange, NJ 07017
Block 61, Lot 6

Project Number: 19PA-02

Designed By: TLR

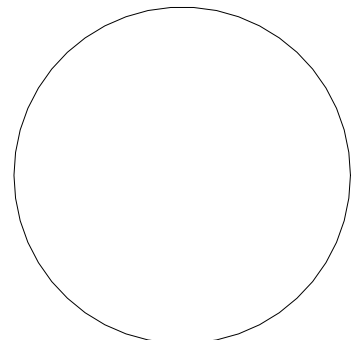
Drawn By: TLR

Checked By: TLR

Date: 07/30/19

Second
Floor Plans
SK2.3

(c) 2019 MBA Architects





① Front (East)
1/4" = 1'-0"



Green Stories LLC

855 Bloomfield Avenue
Suite 200A
Glen Ridge, NJ 07028

phone: (973) 377-6877
fax: (973) 707-2256
Info@GreenStoriesLLC.com
www.GreenStoriesLLC.com

Colonial Homes
87 N 18th St
East Orange, NJ 07017
Block 61, Lot 6

Project Number: 19PA-02

Designed By: TLR

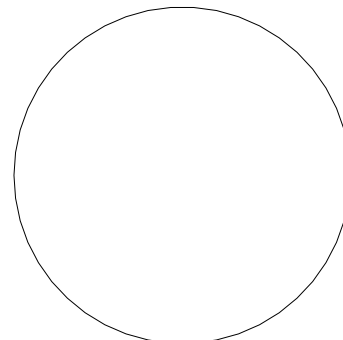
Drawn By: TLR

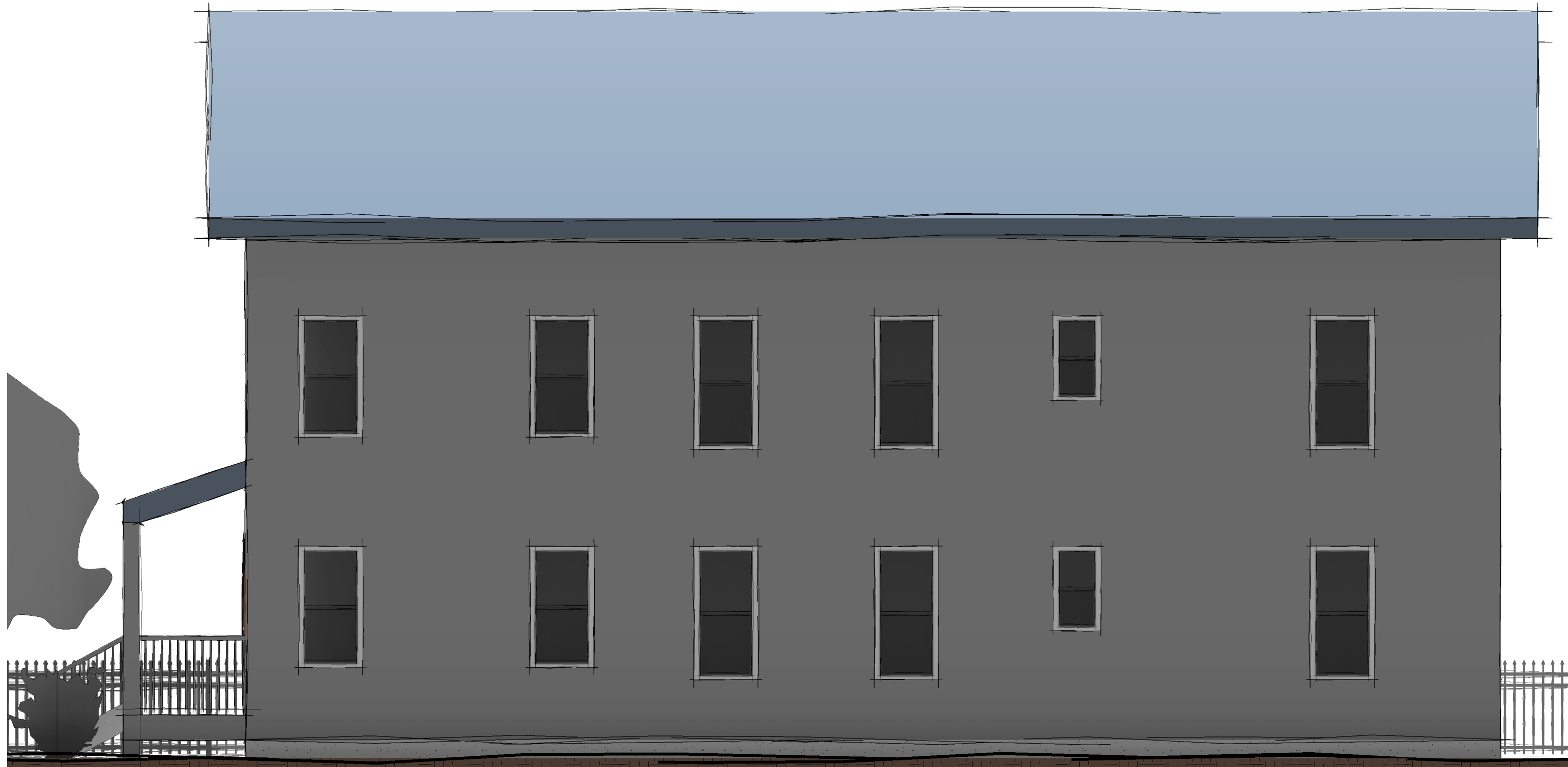
Checked By: TLR

Date: 07/30/19

Front
Elevation
SK2.4

(c) 2019 MBA Architects





① Side (North)
1/4" = 1'-0"



Green Stories LLC

855 Bloomfield Avenue
Suite 200A
Glen Ridge, NJ 07028

phone: (973) 377-6877
fax: (973) 707-2256
Info@GreenStoriesLLC.com
www.GreenStoriesLLC.com

Colonial Homes
87 N 18th St
East Orange, NJ 07017
Block 61, Lot 6

Project Number: 19PA-02

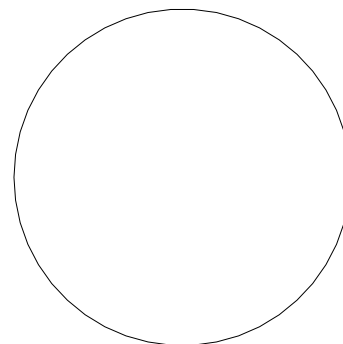
Designed By: TLR

Drawn By: TLR

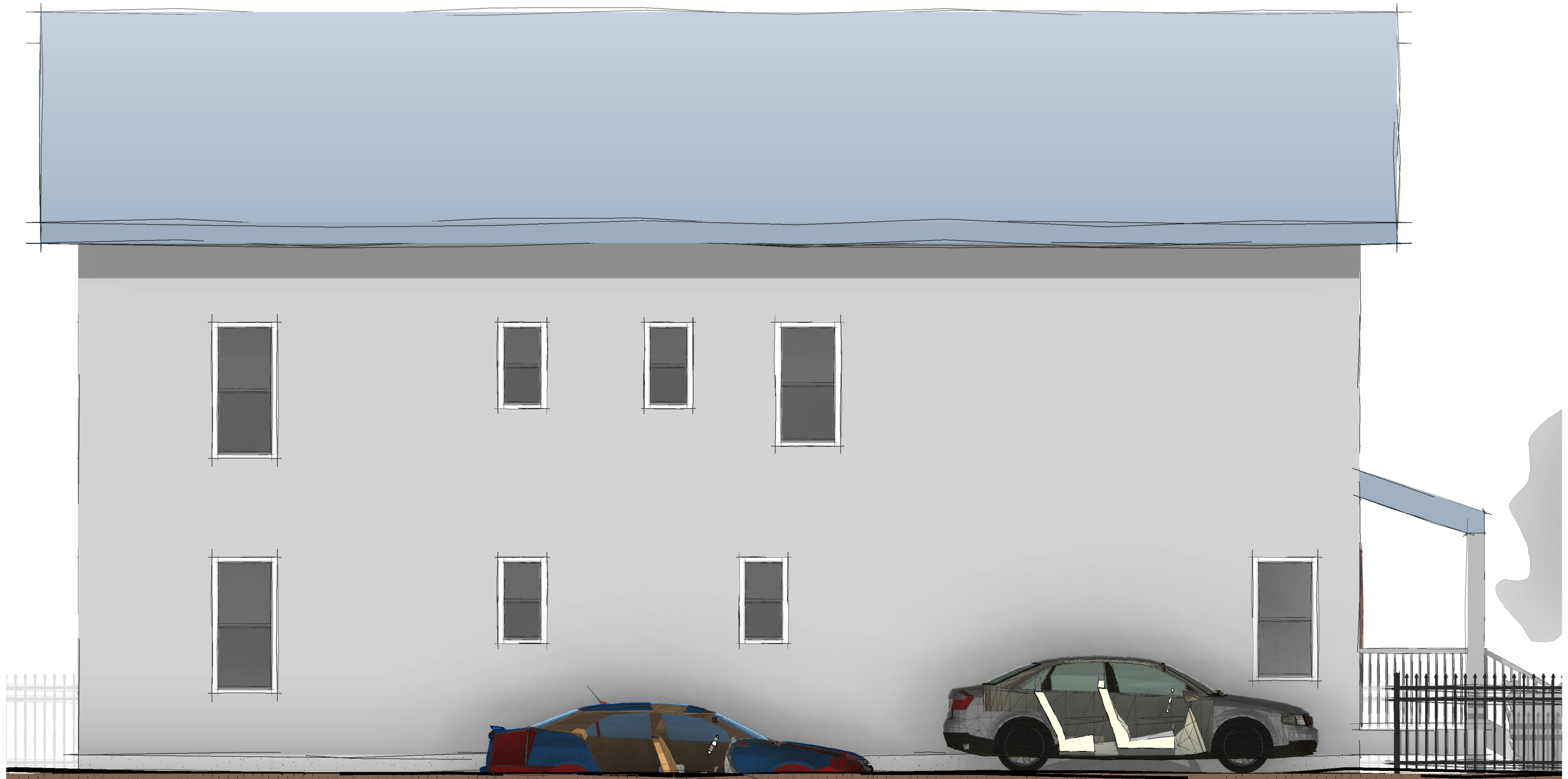
Checked By: TLR

Date: 07/30/19

Side
Elevation
SK2.5



(c) 2019 MBA Architects



① Side (South)
1/4" = 1'-0"



Green Stories LLC

855 Bloomfield Avenue
Suite 200A
Glen Ridge, NJ 07028

phone: (973) 377-6877
fax: (973) 707-2256
Info@GreenStoriesLLC.com
www.GreenStoriesLLC.com

Colonial Homes
87 N 18th St
East Orange, NJ 07017
Block 61, Lot 6

Project Number: 19PA-02

Designed By: TLR

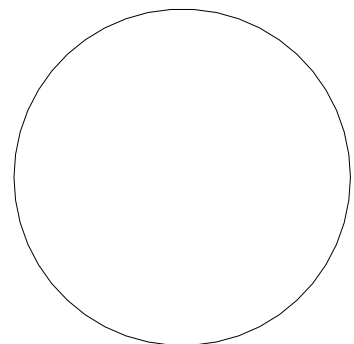
Drawn By: TLR

Checked By: TLR

Date: 07/30/19

Side
Elevation
SK2.6

(c) 2019 MBA Architects





① Rear (West)
1/4" = 1'-0"



Green Stories LLC

855 Bloomfield Avenue
Suite 200A
Glen Ridge, NJ 07028

phone: (973) 377-6877
fax: (973) 707-2256
Info@GreenStoriesLLC.com
www.GreenStoriesLLC.com

Colonial Homes
87 N 18th St
East Orange, NJ 07017
Block 61, Lot 6

Project Number: 19PA-02

Designed By: TLR

Drawn By: TLR

Checked By: TLR

Date: 07/30/19

Rear
Elevation
SK2.7

(c) 2019 MBA Architects

